



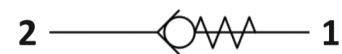
S.Z0.S09

Hybrid SAE Cartridge - 420 Bar Direct acting - Poppet type



Description & Operation

A screw-in, cartridge style, cartridge style, direct acting, poppet type check valve. Main use is as a blocking or load-holding device. The S.Z0.S09 allows flow passage from port 2 to 1: the cartridge has a fully guided check which is spring-biased closed until sufficient pressure is applied at port 2 to open to 1. The flow is blocked in the opposite direction (1 to 2).



Hydraulic Symbol

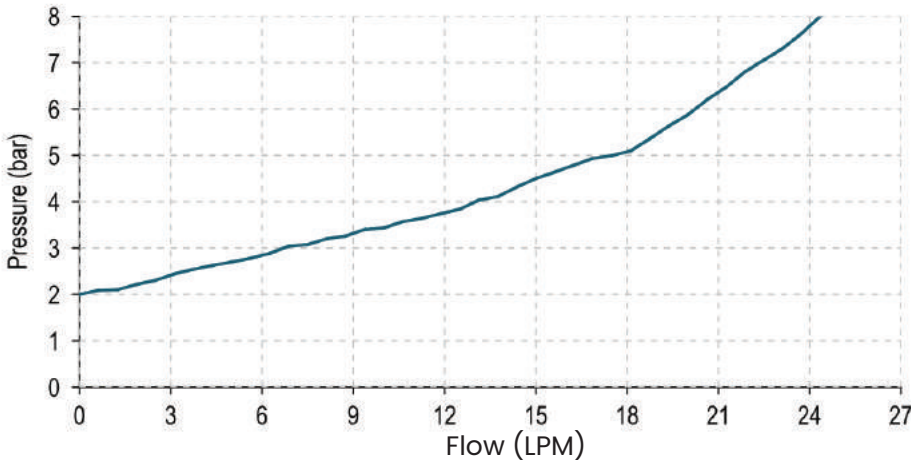


Technical Data

Maximum operating pressure	420 Bar
Maximum flow	25 LPM
Cracking pressure	See table below
Maximum Internal Leakage	0.10 cm ³ / min @ 10 Bar 0.10 cm ³ / min @ 420 Bar
External component treatment	Zn/Fe - standard (96h) Zn/Ni (Upon Request) (720h)
O-ring Temperature Range	-30° C to 110° C (standard sealing NBR - BUNA-N)
Oil Temperature Range	-30° C to 110° C
Fluids	Mineral - based or synthetics with lubricating properties
Viscosities	7.4 to 420 cSt
Filtration	20/18/15 ISO 4406 (maximum filtration admitted)
Orientation	No restrictions
Installation torque	40-45 Nm
Oil testing condition	ISO VG 46 cSt
Seal kit code	SKLT. 031
Weight	0.062 Kg

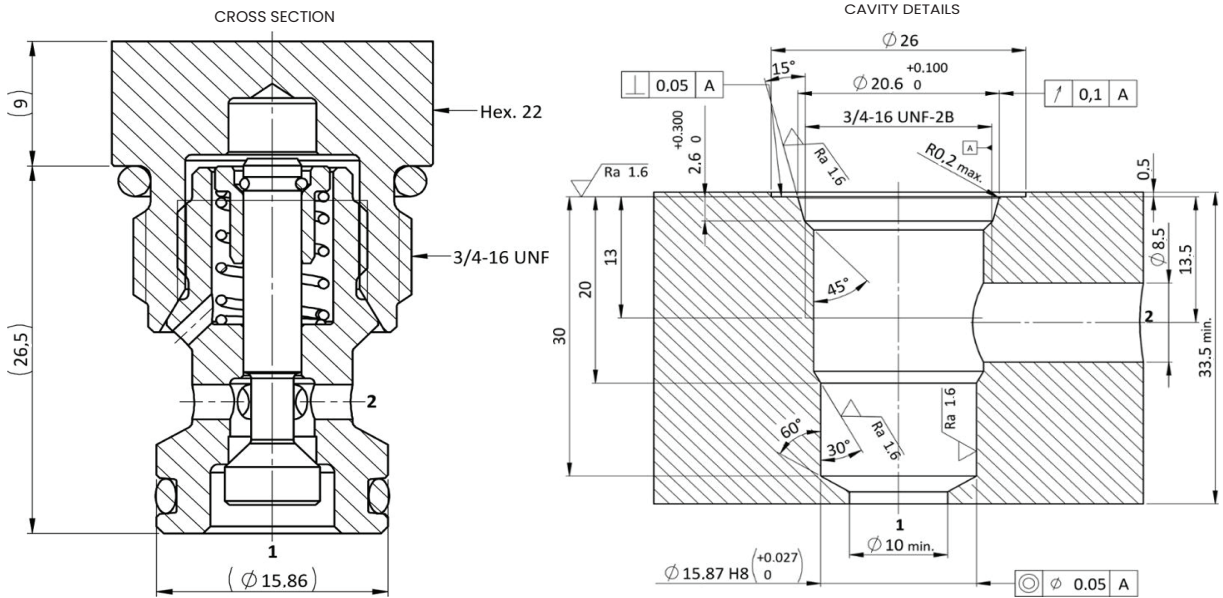
 Performance Curve

PERFORMANCE DETAILS



NOTE
The performance chart illustrates flow handling capacity for significant spring bias options. P/Q curves are recorded at T Oil = 40°C and 46 cSt.

 Dimensional Drawing



 Ordering Code

S • **Z** **0** • **S** **0** **9** • **0** * • **0** **0** **0**

Valve Basic Code

Cavity
S09 = 3/4 - 16 UNF
with ϕ 15.86 nose size

Marking
0 = standard factory marking. customized marking can be done upon request

000 = standard configuration

Bias Spring Option

Spring Model Code	Cracking pressure (Bar)
N	2.0