

DOUBLE ACTING PLOUGH OVERTURNING VALVES WITH ALIGNMENT FOR ON LAND PLOUGHS



VRAP SV FS

Maximum Exchange Pressure 230 Bar
Maximum Pressure 400 Bar

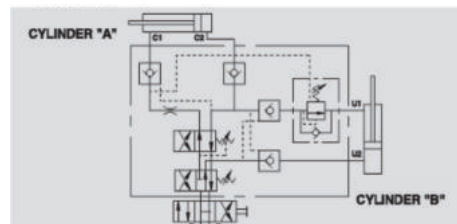
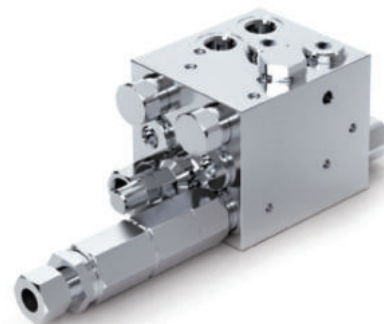


Description & Operation

This valve has been designed for use with two cylinders in sequence for reversible plough to obtain the automatic alignment of load and its overturning.

Operating instructions: first the alignment cylinder B starts lining up the load. Once it reaches the end of stroke, the overturning cylinder A starts the rotation. Upon the completion of this the alignment cylinder B takes the plough back into its working position.

Connect C1 to the rod side, C2 to the head side of the rotation cylinder, U1 to the head side and U2 to the rod side of the alignment cylinder. P and T to the machine's pressure flow. Thanks to its shape, it can be assembled in-line on the hydraulic cylinder or directly fixed onto the plough by the threaded hole in the valve body.



Hydraulic Symbol



Technical Data

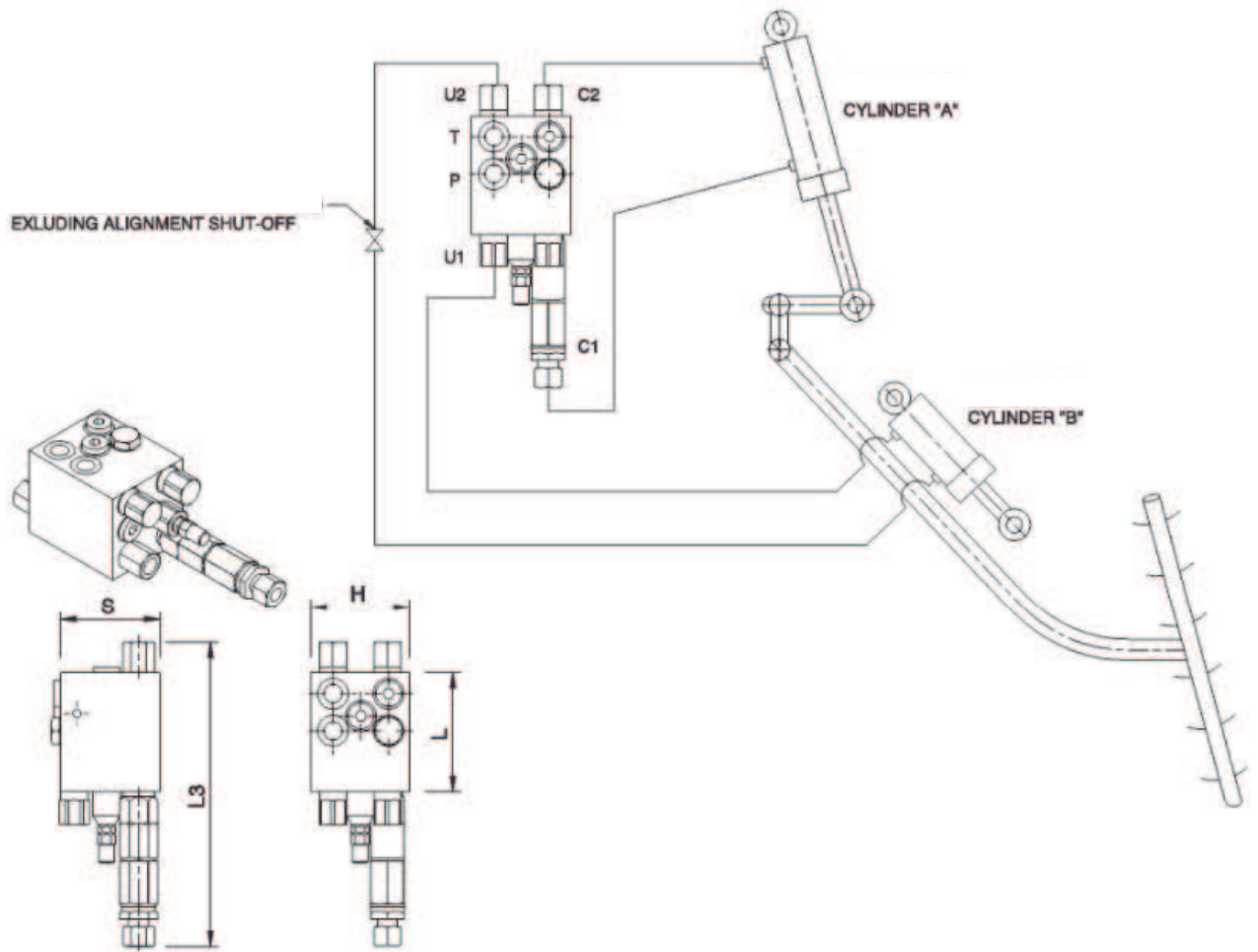
Maximum Exchange Pressure	230 Bar
Maximum Operating Pressure	400 Bar
Body Material	Steel
Internal parts	Hardened and Ground steel
External Component treatment	Zn/Fe - standard (96h) / Zn/Ni (720h)
Oil Temperature	50 Deg. C
Fluids	Mineral based or synthetics with lubricating properties
Viscosity	30 cSt
Standard Sealing	NBR-Buna N
Filtration	20/18/15 ISO 4406 (Max. Filtration admitted)
Orientation / Mounting	Inline
Weight	See Ordering details



Specifications

Type	Max Exchange Pressure	Max Pressure
	Bar	Bar
VRAP 80/90 SV FS	230	400
VRAP 110/130 SV FS	230	400

 **Dimensional Drawing**



 **Ordering Details**

Code	Type	C1-C2 U1-U2	L	L1	L2	L3	H	S	Weight
		GAS	mm	mm	mm	mm	mm	mm	Kg
R-V0342	VRAP 80/100 SV FS	G 3/8"	94	123	30	241	80	80	4.980
R-V0343	VRAP 110/130 SV FS	G 3/8"	94	123	30	241	80	80	4.980

PLOUGH OVERTURNING VALVES