

# DOUBLE ACTING PLOUGH OVERTURNING VALVES



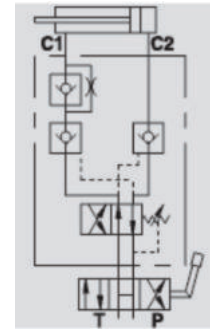
## VRAP DE

**Maximum Exchange Pressure 250 Bar**  
**Maximum Pressure 400 Bar**

### Description & Operation

This valve has been designed for use on cylinders for reversible ploughs to obtain the automatic oil flow reversal, and therefore the reversal of the hydraulic cylinder which rotates the plough. It is provided with a double pilot operated check valve which provides leakage control for the cylinder in any position. The reversal of the cylinder is controlled by a pressure compensated relief valve set to exactly in the dead head point of the plough, generating more power and speed. It can be assembled on heavy and unbalanced ploughs with cylinders with the following internal diameters: 40/50, 60/80, 80/100, 100/110, 110/130 mm.

Connect C1 to the cylinder's rod side, C2 to the head side, P and T to the machine's pressure flow. Thanks to its shape, it can be assembled in-line on the hydraulic cylinder or directly fixed onto the plough by the threaded hole in the valve body.



Hydraulic Symbol

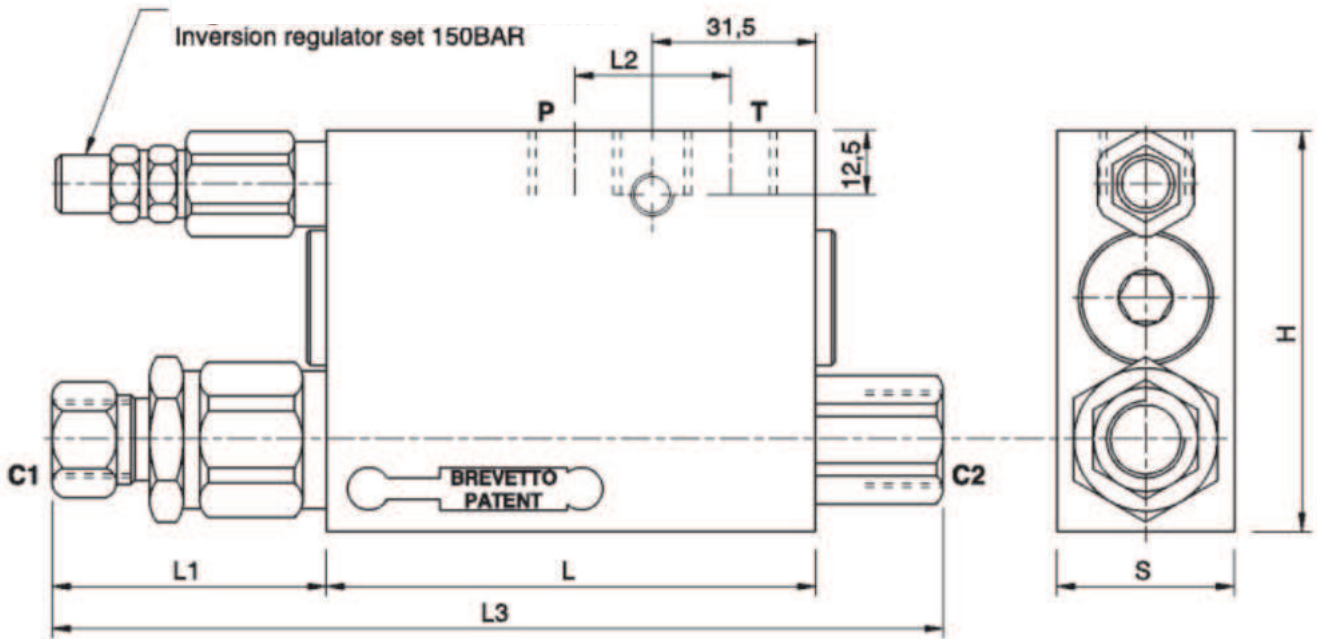
### Technical Data

Maximum Exchange Pressure	250 Bar
Maximum Operating Pressure	400 Bar
Body Material	Steel
Internal parts	Hardened and Ground steel
External Component treatment	Zn/Fe - standard (96h) / Zn/Ni (720h)
Oil Temperature	50 Deg. C
Fluids	Mineral based or synthetics with lubricating properties
Viscosity	30 cSt
Standard Sealing	NBR-Buna N
Filtration	20/18/15 ISO 4406 ( Max. Filtration admitted)
Orientation / Mounting	Inline
Weight	See Ordering details

### Specifications

Type	Max Exchange Pressure	Max Pressure
	Bar	Bar
VRAP 40/50 DE	250	400
VRAP 60/80 DE	250	400
VRAP 80/100 DE	250	400
VRAP 100/110 DE	250	400
VRAP 110/130 DE	250	400

 Dimensional Drawing



 Ordering Details

Code	Type	C2	C1	L	L1	L2	L3	H	S	Weight
		P-T								
R-V0282	VRAP 40/50 DE	G 3/8"	Ø12	94	58	30	176	80	35	2.130
R-V0290	VRAP 60/80 DE	G 3/8"	Ø12	94	58	30	176	80	35	2.140
R-V0300	VRAP 80/100 DE	G 3/8"	Ø12	94	58	30	176	80	35	2.140
R-V0302	VRAP 100/110 DE	G 3/8"	Ø12	94	58	30	176	80	35	2.140
R-V0320	VRAP 110/130 DE	G 3/8"	Ø12	94	58	30	176	80	35	2.130