



Shuttle Valves

SH.C4.M18 Valve Series

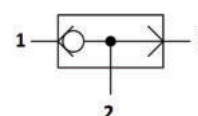
METRIC Cartridge - 350 bar

Direct acting - Ball Type



Description & Operation

Shut-off valves for hydraulics systems, with two inlets and one outlet. Ball seat construction, automatic switching. The inlet with the higher pressure (port 1 or 3) is directly connected to tank (port 2), while the second inlet (port 3 or 1) is shut off.



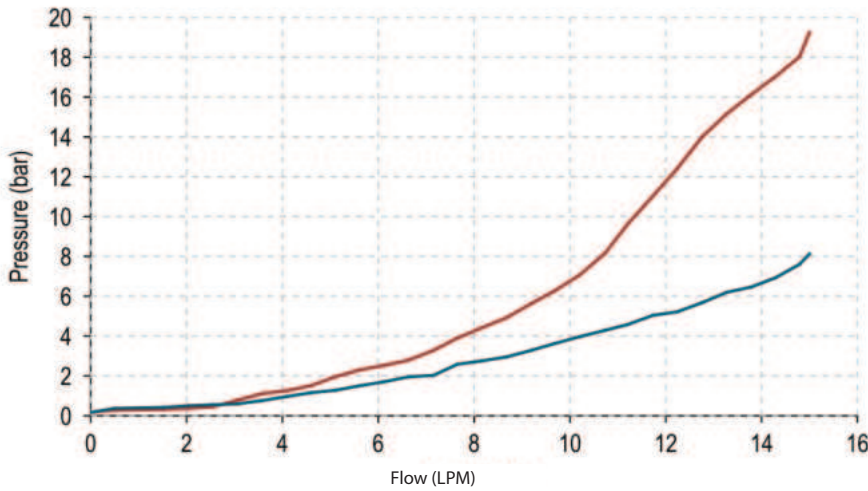
Hydraulic Symbol



Technical Data

Maximum operating pressure	350 Bar
Maximum flow	15 LPM
Maximum internal leakage	0.25 cm ³ / min @ 350 bar
External component treatment	Zn/Fe - standard (96h) Zn/Ni (720h)
O-ring Temperature Range	-30° C to 110° C (standard sealing NBR - BUNA-N)
Oil Temperature Range	-30° C to 110° C
Fluids	Mineral - based or synthetics with lubricating properties
Viscosities	7.4 to 420 cSt
Filtration	20/18/15 ISO 4406 (maximum filtration admitted)
Orientation	No restrictions
Installation torque	35-40 Nm (Hex. 22)
Oil testing condition	ISO VG 46 cSt
Seal kit code	SLKT.156
Weight	0.062 kg

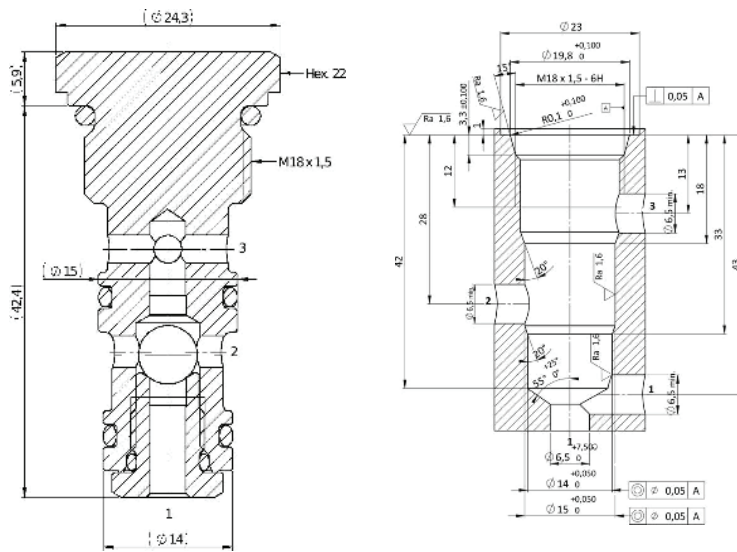
 **Performance Curve**



NOTE:
The performance chart illustrates flow handling capacity in max flow condition. p/Q curves are recorded at TOil = 40°C and 46 cSt.

 **Dimensional Drawing**

Cross Section and Cavity Details



 **Ordering Code**

S H • C 4 • M 1 8 • 0 * • * * *

valve basic code

000=Standard configuration

Cavity
M18 =METRIC M18 x 1.5 with $\varnothing 15$ and $\varnothing 14$ nose sizes

Marking
0 =standard factory marking. customized marking can be done upon request