

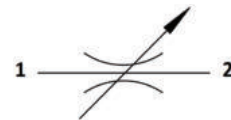
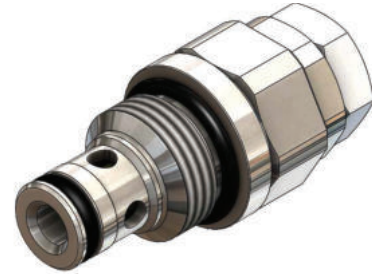


FR.T0.S08 Valve Series

SAE Cartridge – 350 Bar
Direct acting – Poppet Type

Description & Operation

A cartridge style, screw in, non pressure compensated, adjustable flow restrictor valve. Once the flow is adjusted to desired value, both the 1 to 2 and 2 to 1 flow paths are permitted.

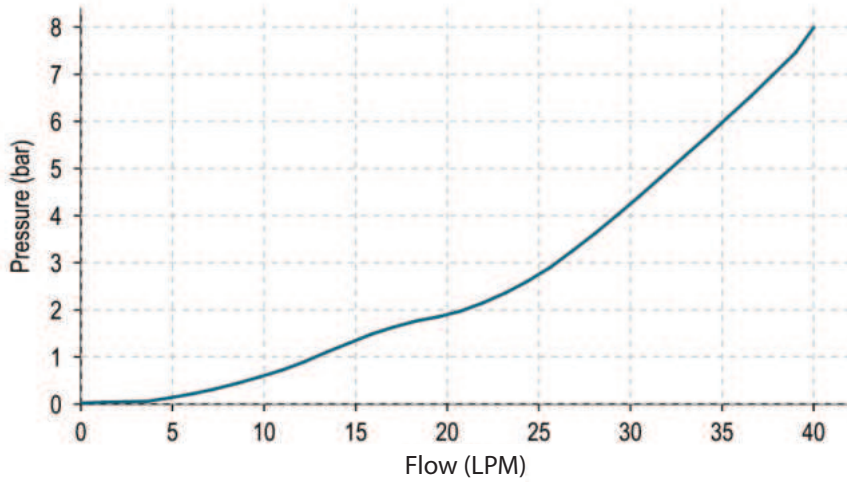


Hydraulic Symbol

Technical Data

Maximum operating pressure	350 Bar
Maximum flow	40 LPM
External component treatment	Zn/Fe - standard (96h) Zn/Ni (720h)
O-ring Temperature Range	-30° C to 110° C (standard sealing NBR - BUNA-N)
Oil Temperature Range	-30° C to 110° C
Fluids	Mineral - based or synthetics with lubricating properties
Viscosities	7.4 to 420 cSt
Filtration	20/18/15 ISO 4406 (maximum filtration admitted)
Orientation	No restrictions
Installation torque	40-45 Nm
Oil testing condition	ISO VG 46 cSt
Seal kit code	SLKT.003
Weight	0.100 kg

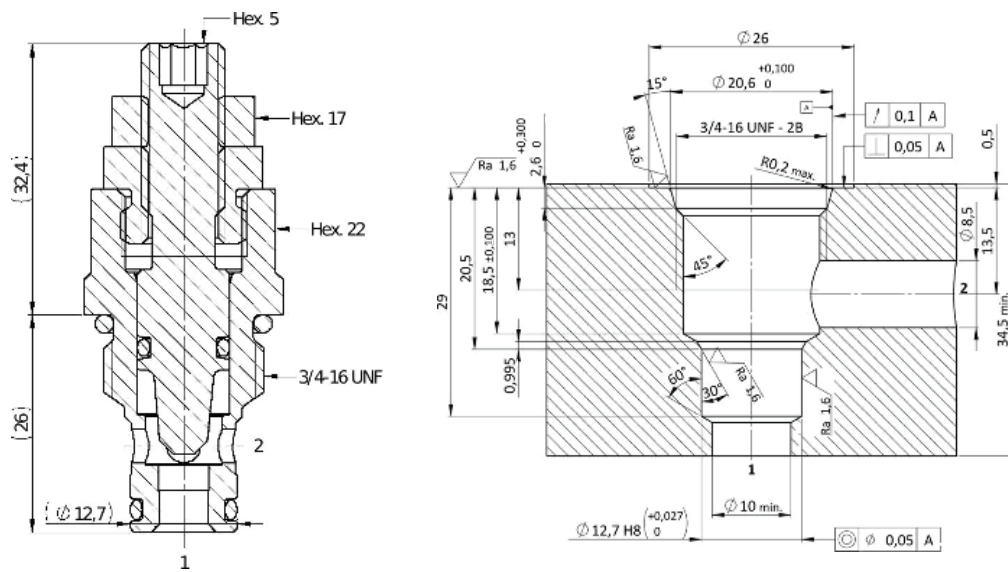
 **Performance Curve**



Note: The performance chart illustrates flow handling capacity in the pressure compensated mode for a few significant flow settings. p/Q curves are recorded at TOil = 40°C and 46 cSt.

 **Dimensional Drawing**

Cross Section and Cavity Details



 **Ordering Code**

F R • T O • S O 8 • 0 * • * *

valve basic code

Cavity
S08=3/4 - 16 UNF with
 ⌀ 12.7 nose sizes

Marking
0= standard factory
 marking Customized
 marking can be done
 upon request

Flow adjustment
0=Hex Allen Head
v=Top Plastic Knob
w=Top Plastic Knob+Plastic
 counter Knob