



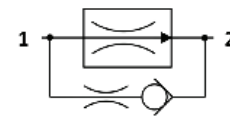
FR.SO.G12 Valve Series

GAS Insert – 250 Bar

Direct acting – Pressure Compensated

Description & Operation

A direct acting, screw-in insert type, 2-way pressure compensated flow control valve. The flow rate of this valve in the 1 to 2 flow path is largely independent of the system pressure and is determined by the dimension of a calibrated orifice. The valve cannot be adjusted for variable flow output. Free flow in the 2 to 1 path is allowed and not pressure compensated



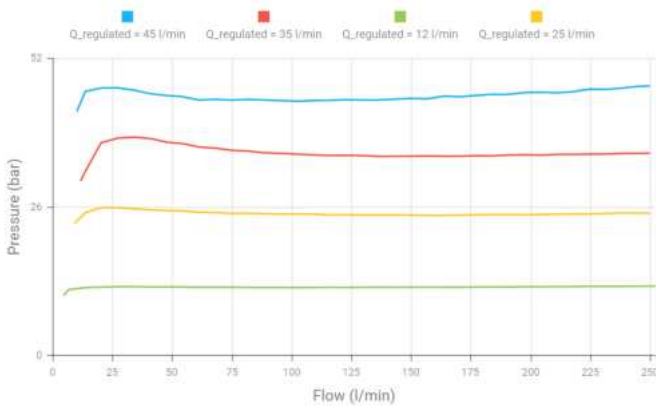
Hydraulic Symbol

Technical Data

Maximum operating pressure	250 Bar (2 to 1 max working pressure 210 bar)
Maximum flow	45 LPM (in flow control function)
External component treatment	Oxide burnished
Oil Temperature Range	-30° C to 110° C
Fluids	Mineral - based or synthetics with lubricating properties
Viscosities	7.4 to 420 cSt
Filtration	20/18/15 ISO 4406 (maximum filtration admitted)
Orientation	No restrictions
Installation torque	8 - 12 Nm
Oil testing condition	ISO VG 46 cSt
Weight	0.054 Kg

 **Performance Curve**

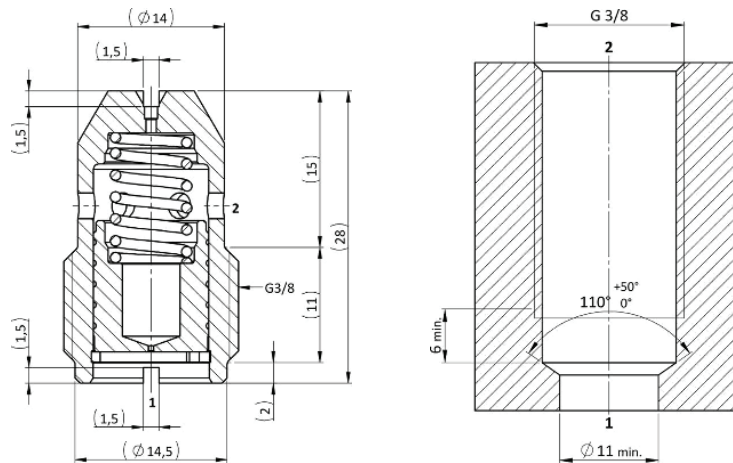
FRS0.G12_1vs2 (Flow control function)



NOTE:
The performance chart illustrates flow handling capacity in the pressure compensated mode for a few significant flow settings. p,Q curves are recorded from 1 to 2 port at TOil = 40°C and 46 cSt.

 **Dimensional Drawing**

Cross Section and Cavity Details



 **Ordering Code**

F **R** • **S** **O** • **G** **1** **2** • **0** * • * * *

valve basic code

Cavity
G38=GAS G3/8

Fixed flow setting (l/min with 1 decimal)

Note = customized fixed flow can be provided upon request

FRCO	
12 LMP/min	120
16 LMP/min	160
20 LMP/min	200
25 LMP/min	250
30 LMP/min	300
35 LMP/min	350
40 LMP/min	400
45 LMP/min	450