

CHECK VALVE



VU

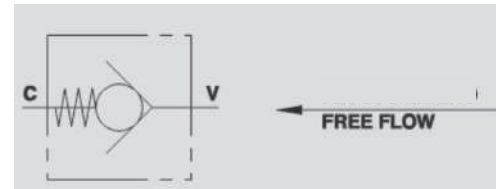
Flow Upto 650 LPM
Pressure 350 Bar



Description & Operation

Check valves allow free flow in one direction and blocks the flow in the reverse direction, used to keep a hydraulic system pressurised.

Connect V to the pressure flow and C to the function. Flow is free from V to C and blocked in the reverse direction.



Hydraulic Symbol



Technical Data

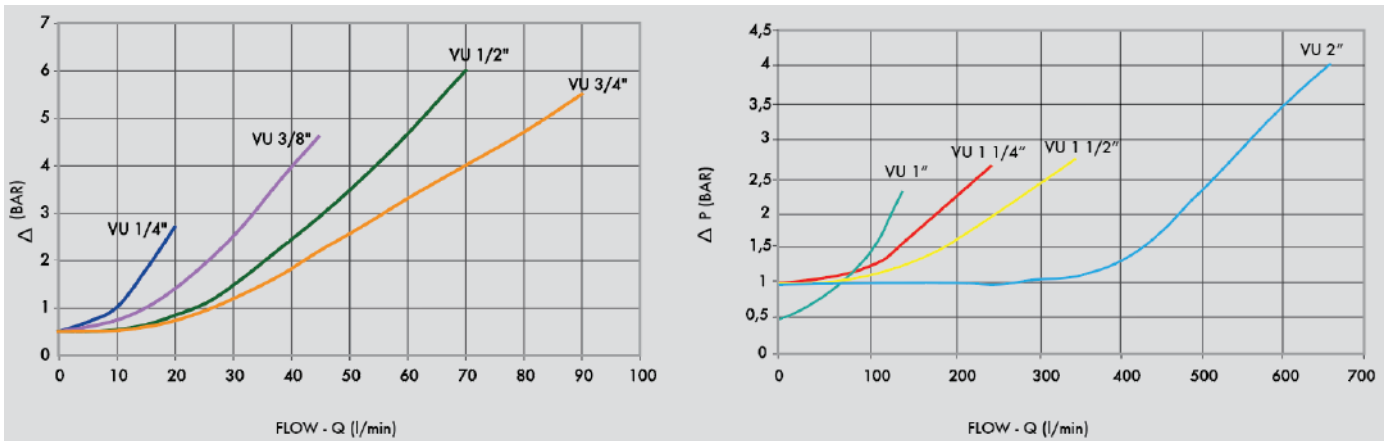
Maximum Flow	650 LPM
Maximum Pressure	350 Bar
Body Material	Steel
Internal parts	Hardened and Ground steel
External Component treatment	Zn/Fe - standard (96h) / Zn/Ni (720h)
Oil Temperature	50 Deg. C
Fluids	Mineral based or synthetics with lubricating properties
Viscosity	30 cSt
Standard Sealing	NBR-Buna N
Filtration	20/18/15 ISO 4406 (Max. Filtration admitted)
Orientation / Mounting	Inline
Weight	See Ordering details



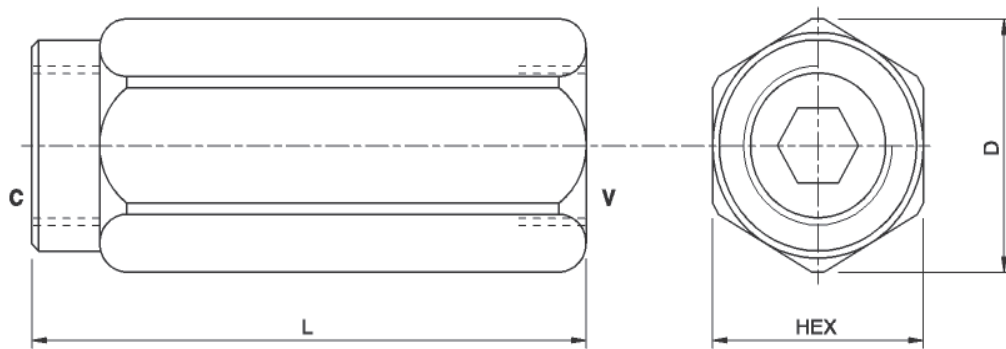
Specifications

Type	Max.Flow	Max.Pressure	Cr.Pressure
	LPM	Bar	Bar
VU 1/8"	3	350	0.4/0.7
VU 1/4"	20	350	0.4/0.7
VU 3/8"	45	350	0.4/0.7
VU 1/2"	70	350	0.4/0.7
VU 3/4"	110	350	0.4/0.7
VU 1"	160	350	0.4/0.7
VU 1 1/4"	250	300	0.7/1
VU 1 1/2"	350	300	0.7/1
VU 2"	650	300	0.4/0.7

 **Performance Curve**



 **Dimensional Drawing**



 **Ordering Details**

Code	Type	V-C	L	HEX	D	Weight
		GAS	mm	mm	mm	Kg
R-V0592	VU 1/8"	G 1/8"	44	14	16	0.038
R-V0590	VU 1/4"	G 1/4"	62	19	21	0.104
R-V0600	VU 3/8"	G 3/8"	68	24	26.5	0.184
R-V0610	VU 1/2"	G 1/2"	77	30	34	0.322
R-V0620	VU 3/4"	G 3/4"	88	36	40	0.492
R-V0630	VU 1"	G 1"	105	41	46	0.676
R-V0632	VU 1 1/4"	G 1" 1/4	135	55	63	1.646
R-V0633	VU 1 1/2"	G 1" 1/2	145	60	69	1.950
R-V0633	VU 2"	G 2"	150	70	80	2.726

 **Springs**

Code	0.4/0.7 Bar	1 Bar	3 Bar	5 Bar	8 Bar
VU 1/4"	V0590	V0590/1	V0590/3	V0590/5	V0590/8
VU 3/8"	V0600	V0600/1	V0600/3	V0600/5	V0600/8
VU 1/2"	V0610	V0610/1	V0610/3	V0610/5	V0610/8
VU 3/4"	V0620	V0620/1	V0620/3	V0620/5	V0620/8
VU 1"	V0630	V0630/1	V0630/3	V0630/5	V0630/8
VU 1 1/4"	/	V0631	V0631/3	V0631/5	V0631/8
VU 1 1/2"	/	V0632	V0632/3	V0632/5	V0632/8
VU 2"	V0633	/	/	/	/

 **On Request**

- Different cracking pressures: 1-3-5-8 bar (please specify the desired cracking pressure in the product description).
- NPT thread (code VN...instead of V0... example: VU 1/4" NPT code VN590)
- Stainless steel body (VX instead of V0 example: VU 1/4" INOC code = VX590)

CHECK VALVES