

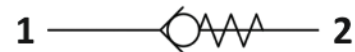


## S.D0.G14 Valve Series

**SAE Insert - 350 Bar**  
**Direct Acting - Popper Type**

### Description & Operation

A screw-in, direct acting, poppet type in-line check valve. Main use is as a blocking or load-holding device. The S.D0.G14 allows flow passage from port 1 to 2: the cartridge has a fully guided check which is spring-biased closed until sufficient pressure is applied at port 1 to open to 2. The flow is blocked in the opposite direction (2 to 1).



Hydraulic Symbol

### Technical Data

Maximum operating pressure	350 Bar
Maximum flow	20 LPM
Maximum internal leakage	0.1 cm <sup>3</sup> / min @ 10 Bar 0.1 cm <sup>3</sup> / min @ 350 Bar
External component treatment	Zn/Fe - standard (96h) Zn/Ni (720h)
O-ring Temperature Range	-30° C to 110° C (standard sealing NBR - BUNA-N)
Oil Temperature Range	-30° C to 110° C
Fluids	Mineral - based or synthetics with lubricating properties
Viscosities	7.4 to 420 cSt
Filtration	20/18/15 ISO 4406 (maximum filtration admitted)
Orientation	No restrictions
Installation torque	15 Nm
Oil testing condition	ISO VG 46 cSt
Seal kit code	SLKT.016
Weight	0.005 kg

S • D • G 1 4 •