



IS.0.M16 Valve Series

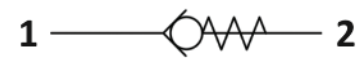
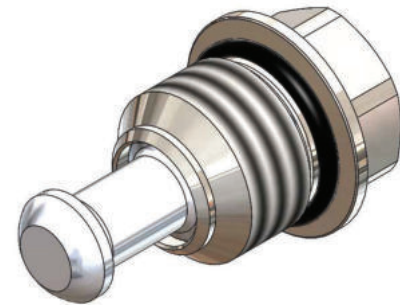
METRIC Insert - 420 Bar

Direct acting - Poppet type



Description & Operation

A screw-in, direct acting, poppet type check valve. Main use is as a blocking or load-holding device. The IS.0.M16 allows flow passage from port 1 to 2: the cartridge has a fully guided check which is spring-biased closed until sufficient pressure is applied at port 1 to open to 2. The flow is blocked in the opposite direction (2 to 1). Insert type valve: the poppet seals directly against the cavity



Hydraulic Symbol



Technical Data

| | |
|------------------------------|---|
| Maximum operating pressure | 420 Bar |
| Maximum flow | 40 LPM |
| Maximum internal leakage | 0.10 cm ³ / min @ 10 Bar 0.10 cm ³ / min @ 420 Bar |
| External component treatment | Zn/Fe - standard (96h) Zn/Ni (720h) (Upon Request) |
| O-ring Temperature Range | -30° C to 110° C (standard sealing NBR - BUNA-N) |
| Oil Temperature Range | -30° C to 110° C |
| Fluids | Mineral - based or synthetics with lubricating properties |
| Viscosities | 7.4 to 420 cSt |
| Filtration | 20/18/15 ISO 4406 (maximum filtration admitted) |
| Orientation | No restrictions |
| Installation torque | 30 - 35 Nm Hex 15 |
| Oil testing condition | ISO VG 46 cSt |
| Seal kit code | SLKT.008 |
| Coining Kit | CK.001 |
| Weight | 0.032 kg |

