



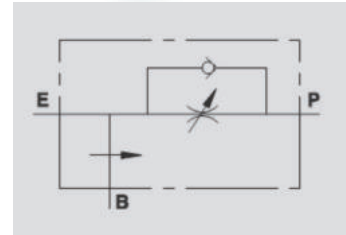
## RFP3 VU

**Flow Upto 80 LPM**  
**Pressure 350 Bar**

### Description & Operation

This valve enables to keep “P” flow constant to a required setting, independent of pressure of inlet flow. Excess flow is drained to T(tank).

Connect E to the pressure flow and P to the actuator or to a line of a hydraulic circuit where flow control is needed. Connect T to the tank. To adjust flow setting rotate the hand knob after loosening the locking nut.



Hydraulic Symbol

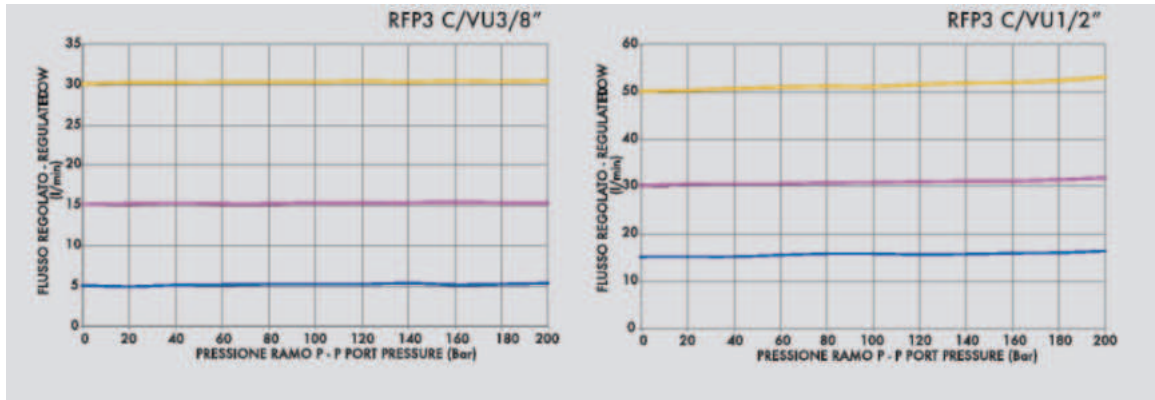
### Technical Data

Maximum Flow	80 LPM
Maximum Pressure	350 Bar
Body Material	Steel
Internal parts	Hardened and Ground steel
External Component treatment	Zn/Fe - standard (96h) / Zn/Ni (720h)
Oil Temperature	50 Deg. C
Fluids	Mineral based or synthetics with lubricating properties
Viscosity	30 cSt
Standard Sealing	NBR-Buna N
Filtration	20/18/15 ISO 4406 ( Max. Filtration admitted)
Orientation / Mounting	Inline
Weight	See Ordering details

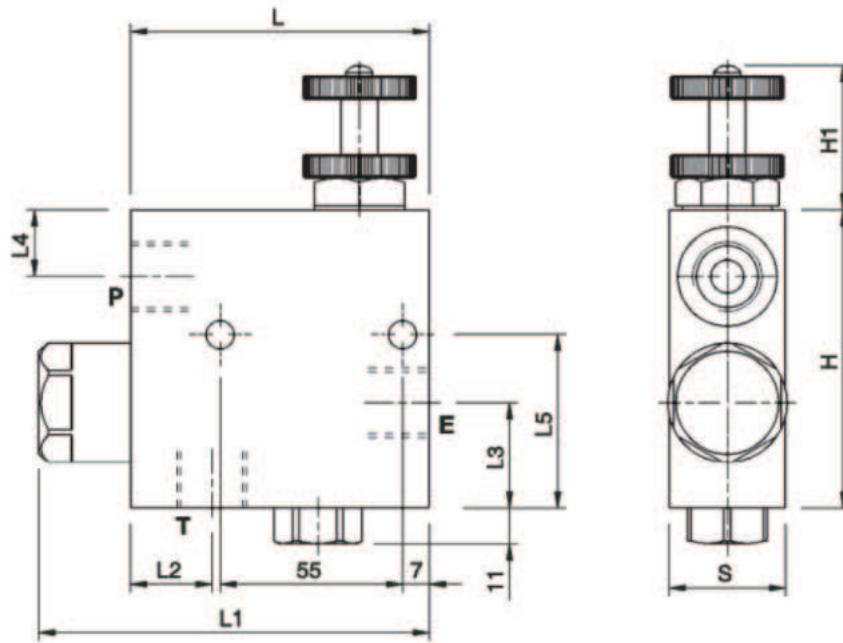
### Specifications

Type	Max Inlet Flow	Max Adjusted Flow	Max.Pressure
	LPM	LPM	Bar
RFP3 3/8" c/VU	60	50	350
RFP3 1/2" c/VU	80	60	350

 Performance Curve



 Dimensional Drawing



 Ordering Details

Code	Type	E-P-B	L	L1	L2	L3	L4	L5	H	H1	S	Weight
		GAS	mm	mm	mm	mm	mm	mm	mm	mm	mm	Kg
R-V1110/VU	RPF3 3/8" c/VU	G3/8"	90	118	25	32	20	53	90	40	35	2.200
R-V1120/VU	RPF3 1/2" c/VU	G1/2"	90	118	25	32	20	53	90	40	35	2.100

 On Request

- Water proof adjustment knob (CODE/P).